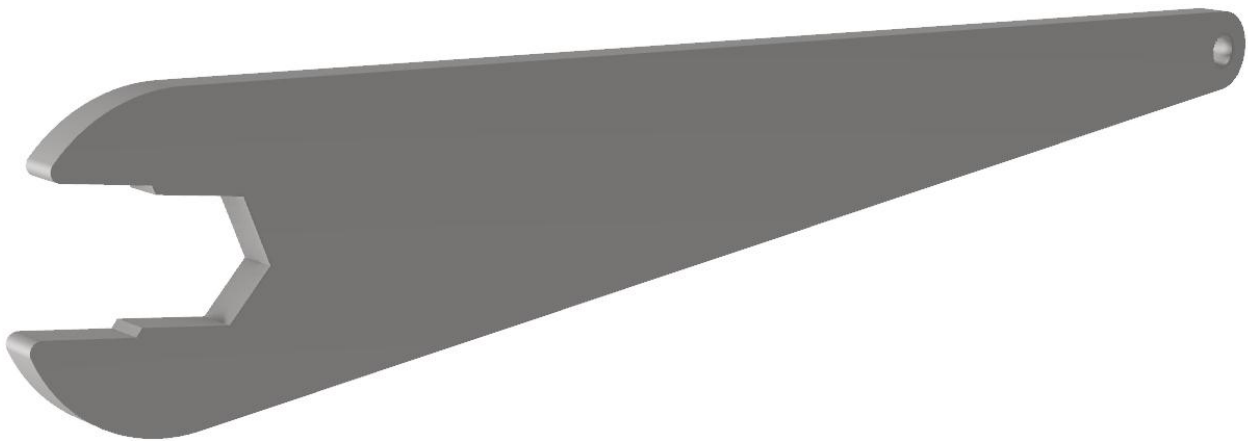


Quarry Mining Product Notice

Quarry Mining introduces the new Lightweight Rod Breaker. This new design has been made to reduce the weight of the rod breaker as well as incorporating a dual 22mm and 25mm AF slot for easy rod uncoupling.

New Australian Made Lightweight Rod Breaker



PLEASE NOTE:

The Quarry Mining Part No. for this design will be ROD-BREAKER-QMC and will be painted **Silver**.

For More Information please contact:

NSW:

Phill Breese

Phill.Breese@quarrymining.com

Mobile: 0429 307 182



QLD:

Kevin Royal

Kevin.Royal@quarrymining.com

Mobile: 0402 467 743